



The Evergreen Foundation



Annual Report
2023/24

Growing Good in our Community

A message from the Evergreen Trustees

The 2023/24 financial year has been one of the biggest years of activity for The Evergreen Foundation due to our Cyclone Gabrielle Relief initiative. We have been able to support our communities to recover and rebuild in the Cyclone affected areas of the East Coast.

Evergreen has received \$2,768,525 of grants from government, corporate and charities together with private giving from a huge number of New Zealanders. We have been committed to distributing those funds efficiently and to locations and groups where it will be best used. We are proud to report that from April 2023 to March 2024, \$2,500,246 was distributed via 126 grants, reaching communities from Gisborne to Wairarapa.

Evergreen has supported rural community events, the horticulture and agriculture communities through industry initiatives and events, and rural families to get their children to boarding school. We have also supported volunteer-led initiatives such as the Hawke's Bay Clean-up Team, The Dinner Club, Neela's Thai Kitchen and the Hawke's Bay Cyclone Laundry Network to support the day-to-day lives of Cyclone affected locals.

Alongside the Cyclone Relief Fund, Evergreen also continues to focus on alleviating hardship in everyday lives through education with Lindisfarne Scholarships; through community via the Heretaunga Women's Centre, Project Prima Volta and The Children's Christmas; and through our Cancer Care and Specialist Health support.

The Evergreen Board of Trustees would like to take the opportunity to thank our Cyclone Relief Grants Committee: David Todd, Bruce Beaton, Lochie MacGillivray and Karen Morrish for their selfless dedication and guidance in the distribution of Evergreen's Cyclone Relief Funds. Meeting fortnightly for most of the year has meant the Foundation has been able to deliver on its goal of moving quickly and effectively to distribute our donor funds and get them to those who needed it, this year more than ever.

Thank you to Jessica O'Sullivan for her thorough work developing a funding approach for schools during the Cyclone Relief. Recognition and thanks to Geri O'Sullivan and the late Anne-Marie O'Sullivan for their contribution and support to Heretaunga Women's Centre and Project Prima Volta; to Michelle O'Sullivan for her dedication to the Lindisfarne Scholarships programme, and to Barry O'Sullivan for his support to the Farmer Connect Days.

We are thrilled and humbled by the support from funding bodies, businesses and the many donations from private givers across the country. For all those entities to entrust Evergreen to deliver support to our communities in need has been a responsibility we have taken on earnestly and we can see the tangible progress that is taking place.

Our great thanks to all our donors, volunteers and team members who have supported the Foundation to help our communities.

**John O'Sullivan, Brendan O'Sullivan,
Roger Hooker, Stephen Greer**

Contents

Non Financial Information

Statement of Service Performance	4 - 5
Our Donors	5
Service Performance	6 - 13

Financial Information

Statement of Financial Performance	14
Statement of Financial Position	15
Statement of Cash Flows	16
Statement of Accounting Policies	17
Notes to the Performance Report	18 - 19
Entity Information	20

Cover image: The team at the Gisborne Hort Day.

Below: Ruby Tui at the Evergreen community event at Tutira School which had been cut off.



Statement of Service Performance

The Evergreen Foundation aims to improve the life situations of individuals and families within the community in line with the objectives of the Trust. The Foundation uses the following statements to assess applications against the objectives:

Poverty, care, support and protection of disadvantaged and needy

People who are in need or who have suffered genuine financial hardship from a temporary or long-term change in their circumstances. This may include anyone who does not have access to the normal things of life that most people take for granted. Relief will be given when an identifiable need arises from their circumstances that require support and they would have difficulty in addressing that need themselves.

Education

Providing assistance or support for the development of individual capabilities, competencies, skills and understanding. This may include formal education and training, scholarships, educational equipment and research funding where the results will benefit the community.

Cancer and Specialist Healthcare

A cancer and healthcare care programme which will offer guidance and some financial assistance to help those in need navigate their way through the health system. We envisage this will include help for second opinions, scans etc to enable recipients to get care earlier than if they didn't have this assistance.

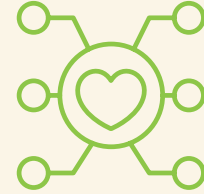
The Evergreen Foundation provided a total of 126 grants in the 2024 financial year, totalling \$2,500,246.



126
grants provided in 2024



\$2,500,246
total grants for 2024



\$361,912
in Community grants



\$30,232
in Cancer and Specialist
Healthcare grants



\$499,128
in Education grants



\$1,608,974
in Hardship grants

Our Donors

We would not have been as successful in our activities without the generosity of our many donors. Special thanks to the following organisations:

CORNERSTONE DONORS



Service Performance

1. FINANCIAL HARDSHIP

A total of \$1,608,974 was provided to help relieve families and individuals enduring hardship.

Included in this was ten grants that were provided to families and individuals to relieve the financial strain of various difficulties in their lives.

We contributed over \$100,000 to the Hawke’s Bay Children’s Christmas which aims to make a difference to the lives of children, experiencing hardship across our community and who might not otherwise receive a gift at Christmas.



\$1,608,974
in hardship grants



\$100,000
to the Hawke’s Bay
Children’s Christmas



Evergreen’s Laura Wade delivering gifts to families and children living in temporary accommodation.

“Many thanks again for the Xmas gifts. They were well received, especially the petrol and food vouchers as it meant some got to travel out of town to be with their family for their Xmas. That meant a lot.”



Trustee Brendan O'Sullivan with the Hawke's Bay Clean Up Team as they work on the heavy task of removing silt.

CYCLONE RELIEF FUND

With funds raised for The Evergreen Foundation's Cyclone Relief Fund we were able to make a difference to hardship in our community as follows:

Silt Clean up

The Evergreen Foundation provided just over \$190,000 to two volunteer groups - The Hawke's Bay Clean-up Team and the River of Silt. We supplied these teams with tools, vehicles, trailers a digger, PPE gear and covered some operating expenses to enable them to do their work.

During the year approximately 175 homes were desilted and prepared for rebuild or recovery, saving an estimated \$8,750,000* for homeowners. The approximate number of volunteer days contributed by these people from across New Zealand to date, is in the vicinity of 2,500 – 3,000 days.

*Based on a \$50k per home average. The estimated range \$30-70k



Over **\$190,000** to silt clean up volunteer groups



\$8,750,000 in estimated savings for homeowners

Neela Neela's Thai Kitchen

Neela and her volunteer team cooked and delivered 118,000 meals over an 8 month period. The Evergreen Foundation supported this initiative through funding the purchase of a large amount of the ingredients used to make these meals.

The initiative used almost 1,200 volunteer/people days to make this happen.

The Dinner Club

Evergreen supported the Pakowhai-based, volunteer-run weekly Dinner Club by funding its food supplies for the team to cook enabling a weekly get-together of Cyclone affected and displaced locals. It meant people were able to come together, share their experiences and be fed a delicious home-made dinner from china plates and proper cutlery.

For these people, who were left with nothing and many living in caravans, eating noodles with no end in sight, this community group was a lifeline by offering something "normal" in their lives and providing an ongoing support network.

The Dinner Club, led by Jane Morgan, has served over 5,000 plates of food since starting. Weekly dinners were made and served by up to six volunteers each week, supporting up to 40 or 50 guests at a time.



118,000

meals cooked and delivered by Neela and her team across 1,200 volunteer days



Over

5,000

plates of food served by The Dinner Club



Neela and some of her team preparing meals.



The Hawke's Bay Laundry Network in action.



Over
3,600
 loads of washing
 desilted, cleaned,
 dried and delivered

Hawke's Bay Laundry Network

This volunteer network, led by Georgina Miller and Annabel Mason, was set up in March 2023 to support flood affected families and also those volunteers working out in the field during the crisis phase. It drew from a pool of 200 volunteers, aged 21 to 83 years, to wash and dry laundry each day. The Evergreen Foundation was able to step in at a time when the Laundry Network expanded to a local unused Mr Apple RSE laundry facility.

Evergreen funded washing powder and petrol vouchers for volunteers at a critical time of expansion for the Laundry Network to get displaced families through the winter with clean, dry clothing, towels and bedding.

The laundry network operated for seven months, had a network of 200 volunteers, who collected and then delivered over 3,600 loads of desilted, clean, dry washing to families in need, supporting the wellbeing of displaced families and volunteers alike.

“We just wanted to say thank you for the great support all you ladies are providing for me and my family, especially my parents. You may not understand the impact your help has on us, but know you are all appreciated and we are so grateful for your time and energy in this time of need thank you!”



The Bin Sanitisation Project in full swing.

Bin Sanitisation

Evergreen partnered with TUMU Timbers to run a bin sanitisation programme which included, collecting bins from growers and neighbouring properties, cleaning them to an agreed standard, fixing when needed and returning them to their original owners for the next harvest.

Over a 10 month period ending January 2024, 30,000 bins were cleaned and returned to growers saving an estimated \$3M in replacement costs. The mental wellbeing of having these bins removed from properties was immeasurable.

Evergreen contributed \$525,000 to this initiative.



\$3M

estimated savings in bin replacement costs for growers



30,000

bins collected, cleaned, repaired and returned

“As an independent grower having our bins taken care of like this has been amazing – such a reprieve as with so much to get our heads round we just didn’t know where to start with sorting it out, let alone how to cover costs. Thank you! We won’t forget this.”



Evergreen's Hort day 'goodie' bins for 195 Hawke's Bay and Gisborne growers.

Supporting Our Growers

Two events were facilitated by Evergreen in support of our growers who were hit hard by Cyclone Gabrielle, one was held in Hawke's Bay and another in Gisborne.

Over \$600,000 was allocated to run the two events, with the aim of pulling the horticultural community together, along with invited industry advisers and guests. A total of 195 growers and 425 industry guests took part in the two events.

Each grower was provided with a fruit bin full of "goodies"- orchard tools, equipment and home goods - and the opportunity to connect with others away from their farms.

The feedback from these events has been positive and heartwarming, with growers still thanking us for caring, supporting and valuing them, after what they endured.

RRT Farmer Connect Days

Evergreen supported the Rapid Relief Team with just over \$173,000, to help them facilitate four Farmer Connect days in Gisborne, Wairoa, Hastings and Central HB. Similar to the Hort Days, the focus was on providing fencing and other goodies to encourage pastoral farmers off their land, allowing them to mix with others in the farming sector.

Approximately 300 farmers attended along with industry advisers and guests.



Over
\$600,000
provided to support growers and the horticultural community



Over
\$173,000
to help facilitate 'Farmer Connect' days for farmers and industry advisers

2. EDUCATION

The Evergreen Foundation provided education grants totalling \$499,128 during the year.

This includes a total of 15 grants provided for scholarships to Lindisfarne College to make it more accessible for our future young leaders, particularly rangatahi.

CYCLONE RELIEF FUND

With funds raised for The Evergreen Foundation's Cyclone Relief Fund we were able to make a difference to education in our community as follows:

Boarding Schools

There are nine boarding schools in Hawke's Bay, with over 600 students attending from Cyclone affected areas, some of whom were cut off from their homes and families because of the Cyclone. In addition to last year's funding support, we provided a further \$261,000 into their hardship funds. The school principals allocated the funds where they were best needed.

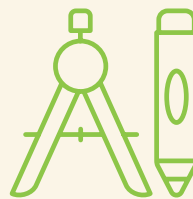
Initially funds were used to cover the extra cost of travel to reunite families, but later covered a portion of school fees of those families suffering financially from the Cyclone.

Other School Support

We provided \$66,000 to other schools which covered the cost of additional transport needs and counselling costs, arising from the Cyclone.



Tikokino school children happy to be back at school.



\$372,000

to support schools and families in Cyclone affected areas

3. CANCER & SPECIALIST HEALTHCARE

Four grants totalling just over \$30,000, were provided to individuals and families to enable access to specialised and timely healthcare.



\$30,000

in Specialist Healthcare grants

4. COMMUNITY SUPPORT

A total of 52 community grants were made totalling over \$361,000.

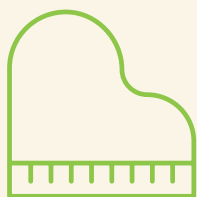
The Heretaunga Women’s Centre received a grant of \$75,000 to support their work with disadvantaged women. Their work involves programmes and counselling utilising 2,500 hours of volunteer time.

Project Prima Volta received a grant of \$35,000 to support their work educating young people on the benefits of music. Around 35 secondary students from predominantly lower decile schools in Hawke’s Bay, spend a year learning to sing and perform. They are also mentored and counselled along the way.



\$75,000

to The Heretaunga Women’s Centre to support their work



\$35,000

to Project Prima Volta to support education through music

CYCLONE RELIEF FUND

With funds raised for The Evergreen Foundation’s Cyclone Relief Fund we were able to make a difference to people in our community as follows:

Supporting rural communities through funding community led events has been a critical aspect for their recovery. Getting off the land, socialising, sharing experiences and connecting with others has been very important for individual wellbeing along with galvanising communities for the work they have ahead of them.

The Evergreen Foundation supported 47 rural community events during the financial year, by funding just under \$200,000 for catering and entertainment. At least 10,000 people benefitted from these events.

Other significant community support included, funding support for the Puketapu Playground restoration and security cameras for the Pakowhai community.



Project Prima Volta

Statements of Financial Performance

FOR THE YEAR ENDED 31 MARCH 2024

	Note	2024	2023
Revenue			
Donations received	1	\$1,630,932	\$1,158,034
Government grants received	1	\$315,339	-
Non-Government grants received	1	\$822,254	-
Interest received	1	\$64,711	\$6,710
Total Revenue		\$2,833,236	\$1,164,744
Expenses			
Grants provided	2	\$2,500,246	\$483,083
Other expenses related to service delivery	2	\$150,249	\$31,782
Total Expenses		\$2,650,495	\$514,865
Net surplus for the year		\$182,741	\$649,879

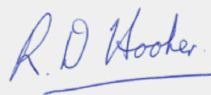
Statements of Financial Position

AS AT 31 MARCH 2024

	Note	2024	2023
Trust Funds			
Capital contributed		\$100	\$100
Accumulated trust surplus		\$892,482	\$709,741
Total Accumulated Trust Funds	6	\$892,582	\$709,841
Current liabilities			
Accounts payable and accruals	3	\$42,733	\$72,898
Deferred Revenue	4	\$89,493	\$15,723
		\$132,226	\$88,621
Total Trust funds and liabilities		\$1,024,808	\$798,462
Current Assets			
Cash balances		\$759,485	\$741,617
GST refund due		\$158,842	\$56,845
		\$918,327	\$798,462
Non-current Assets			
Plant, property and equipment	5	\$106,481	-
		\$106,481	-
Total Assets		\$1,024,808	\$798,462



John Daniel O'Sullivan Trustee



Roger David Hooker Trustee

Stephen Alexander Greer

Stephen Alexander Greer Trustee



Brendan Kevin O'Sullivan Trustee

Statements of Cash Flows

FOR THE YEAR ENDED 31 MARCH 2024

	2024	2023
CASH FLOW FROM OPERATING ACTIVITIES		
<i>Cash was provided from:</i>		
Donations received	\$1,630,932	\$1,158,034
Grants received	\$1,217,618	-
Interest received	\$64,711	\$6,710
	<u>\$2,913,261</u>	<u>\$1,164,744</u>
<i>Cash was applied to:</i>		
Payments of other expenses	(\$169,187)	(\$8,661)
Grants paid	(\$2,500,246)	(\$530,164)
GST paid	(\$102,394)	(\$41,379)
	<u>(\$2,771,827)</u>	<u>(\$580,204)</u>
Net cash flows from operating activities	<u>\$141,434</u>	<u>\$584,540</u>
CASH FLOW FROM INVESTING AND FINANCING		
<i>Cash was applied to:</i>		
Plant & Equipment	(\$123,566)	-
Net cash flows from investing and financing activities	<u>(\$123,566)</u>	<u>-</u>
Net increase in cash held	\$17,868	\$584,540
Cash at beginning of year	\$741,617	\$157,077
Cash at end of year	<u>\$759,485</u>	<u>\$741,617</u>
Represented by:		
Bank Accounts and Cash	<u>\$759,485</u>	<u>\$741,617</u>
RECONCILIATION OF OPERATING SURPLUS TO NET CASH FLOWS FROM OPERATING ACTIVITIES		
Reported surplus after tax	\$182,741	\$649,880
Items not involving cash flows		
Accounting depreciation	\$17,085	-
Impact of changes in working capital items		
Deferred revenue	\$89,493	-
GST payable	(\$101,996)	(\$47,134)
Accounts payable	(\$3,047)	\$44,120
Accruals	(\$42,842)	(\$62,326)
	<u>(\$58,392)</u>	<u>(\$65,340)</u>
Net cash flow from operating activities	<u>\$141,434</u>	<u>\$584,540</u>

Statement of Accounting Policies

ENTITY REPORTING

The Financial Statements are for The Evergreen Foundation, a trust established for charitable purposes and registered with the Charities Services as a charitable entity. The Trust is deemed a Public Benefit Entity for financial reporting purposes, as its primary objective is to provide community benefit.

BASIS OF PREPARATION

The entity applies PBE SFR-A (NFP) Public Benefit Entity Simple Format Reporting - Accrual (Not-For-Profit) on the basis that it does not have public accountability and annual expenses were under the threshold of \$2 million for two consecutive years.

All transactions in the Performance Report are reported using the accrual basis of accounting. The Performance Report is prepared under the assumption that the entity will continue to operate in the foreseeable future.

GOODS AND SERVICES TAX (GST)

The statement of financial performance has been prepared so that all components are stated exclusive of GST. All items in the statement of financial position are stated net of GST, with the exception of receivables and payables, which include GST invoiced.

INCOME TAX

The entity became a registered charity on the 22nd January 2016 and from this date is wholly exempt from New Zealand income tax having fully complied with all statutory conditions for these exemptions.

PROPERTY, PLANT AND EQUIPMENT

All assets are stated at historical cost less accounting depreciation. Historical cost includes expenditure that is directly attributable to the acquisition of the items.

Depreciation of plant and equipment is calculated using straight line rates as appropriate, so as to expense the cost of the assets over their useful lives shown. The rates are as follows:

Plant & Equipment	SL 0% - 40%
Motor Vehicles	SL 0% - 15%

BANK ACCOUNTS AND CASH

Bank accounts and cash in the statement of cashflows comprise cash balances and bank balances available on call.

REVENUE

Donations

Donation revenues are the amounts gifted to the entity for use in charitable purpose and are recorded at the time of receipt.

Deferred revenue

Requires significant grants and/or donations with documented expectations to be recognised as deferred revenue. The funding may then be recognised as revenue over time as the expectation is recognised.

Interest

Interest and investment incomes are accounted for as earned.

GRANTS

Grants are recognised and accounted for at the time of commitment to a funding request by the trustees.

ACCOUNTS PAYABLE AND ACCRUALS

Liabilities are recognised in the period that services are received from suppliers or where Grants have been committed and have not yet been paid out.

CHANGES IN ACCOUNTING POLICIES

There have been no changes in accounting policies.

Notes to the Performance Report

FOR THE YEAR ENDED 31 MARCH 2024

Note		2024	2023
1 Revenue			
Donations received		\$1,488,232	\$594,734
		\$142,700	\$563,300
Government grants		\$315,339	-
Non Government grants		\$822,254	-
Interest		\$64,711	\$6,710
		<u>\$2,833,236</u>	<u>\$1,164,744</u>
2 Expenses	Analysis		
Grants	Cancer & Specialist Healthcare	\$30,232	-
	Community grants	\$361,912	\$3,000
	Education grants	\$499,128	\$246,660
	Financial hardship grants	\$1,608,974	\$233,423
Other Expenses	Administration fees and overheads	\$127,211	\$27,479
	Advertising and marketing	\$5,953	\$4,303
	Other expenses	\$17,085	-
		<u>\$2,650,495</u>	<u>\$514,865</u>
3 Liabilities	Analysis		
Sundry Payables	Accounts Payable	\$37,728	\$45,780
	Fees owing to TUMU Merchants Ltd for services provided	\$5,005	\$27,118
		<u>\$42,733</u>	<u>\$72,898</u>
4 Deferred Revenue			
	<i>Grants received in support of:</i>		
	Cyclone relief - Red Cross	\$62,649	-
	Cyclone relief - Ministry of Social Development	\$17,376	-
	Individual hardship	\$9,468	\$15,723
		<u>\$89,493</u>	<u>\$15,723</u>

During the financial year Red Cross granted \$400,000 to The Evergreen Foundation to support our Cyclone relief fund, \$62,649 remained unused at balance date.

Ministry of Social Development granted \$23,000 to The Dinner Club, a Cyclone relief initiative. The Evergreen Foundation agreed to administer these funds with \$17,376 remaining unused at balance date.

Other unused donations totalling \$9,468, include 3 hardship grants which are committed and will be paid out in the next financial year.

Notes to the Performance Report

FOR THE YEAR ENDED 31 MARCH 2024

Note	2024	2023
5 Property plant and equipment		
Opening net book value	-	-
Additions	\$123,566	-
Accounting depreciation	(\$17,085)	-
Net book value	\$106,481	-
6 Accumulated funds		
Opening trust funds	\$709,841	\$59,961
Surplus for the year	\$182,741	\$649,880
Closing trust fund balance	\$892,582	\$709,841
<p>Where trust revenues and contributions exceed expenses for the year the funds are retained as Trust reserves for future charitable activities in line with the objects of the Trust.</p> <p>At the end of the year, Evergreen have Trust funds committed for the below approved grants, the balance of funds will be paid throughout the next financial year.</p>		
Cyclone Relief	\$436,195	\$515,598
Cancer & Healthcare Support	\$98,100	\$100,000
7 Commitments and contingencies		
The entity has no commitments or contingent liabilities as at balance date.		
8 Related party transactions		
Companies in which Roger Hooker, John O'Sullivan and Brendan O'Sullivan are directors have:		
Made donations to the foundation during the year.	\$142,700	\$223,600
Charged administrative and accounting support fees to the foundation.	\$97,498	\$27,413

Entity Information

Legal Name of Entity	The Evergreen Foundation
Type of Entity	Charitable Trust and Registered Charity
Established	By Trust deed on 4 September 2014 and amended 18 January 2016
Charities	Registration CC52838
IRD number	114-955-728
Trustees	John O'Sullivan Roger Hooker Stephen Greer Brendan O'Sullivan
Objects of the Trust	<p>To provide support to communities in which the TUMU Group of businesses have operated. Support is provided through grants for:</p> <ul style="list-style-type: none"> • The relief of poverty. • The care, support and protection of the disadvantaged and needy and those that support them. • Assistance through scholarships, bursaries and awards for the education of individuals and groups and advancing the education of students by providing such things as books, equipment, educational aids and extracurricular tuition. • The provision of assistance and support to persons who are disadvantaged in the labour market.
Entity Structure	The Evergreen Foundation Governance comprises four trustees, of which one is elected as the chairperson. Trustees are appointed for a term of three years and upon expiry of this term are required to retire by rotation and are eligible for re-appointment. The remaining Trustees then appoint the retiring or new Trustee. The Trustees are required to hold a minimum of two meetings a year. Currently three Trustees are also directors and shareholders of the TUMU Group.
Sources of Funding	Trust funding is through donations from entities within the wider TUMU Group and from the public. The Trust also received Grants from government and non government entities.
Fundraising methods	The Evergreen Foundation launched a Cyclone Relief Fund in 2023, in response to the regions Cyclone Gabrielle Disaster. Funding for Cyclone relief was mainly through a fundraising campaign on social media and on our website. This is the first time The Evergreen Foundation have sought public funding.
IRD number	114-955-728
Solicitors	Sainsbury Logan & Williams PO Box 41, Napier